

BATTERY SOLUTIONS FOR UPS SYSTEMS

UPS equipment and the entire power supply system with its core is the most central part to meet the quality of power supply, and the battery is one of the most important components of the whole system, the "last barrier" of the whole power supply system.



LP SERIES ADVANTAGES

- Maintenance free, sealed design, no watering required;
- Complete products range, wide range of capacities, superior cost performance;
- Multi-alloy grid, improve corrosion resistance, extend battery life;
- High strength ABS plastic cover and case, great impact resistance;
- Puncture resistant micro-porous glass mat separators extend life.

LCP SERIES ADVANTAGES

- Intelligent and advanced production equipment, with more precise control
- High automation production line, reducing control tolerances
- High production efficiency, significantly improving production capacity



BENEFITS



Increased Reliability: Designed specifically for safely handling sub-5 minutes of runtime without sacrificing long-term performance.



Higher power, fewer configurations, less floor space and lower cost investment.



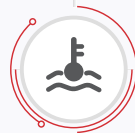
Wide power range, perfectly matching the mainstream UPS models in the market.



Front and top terminal optional, easy to install and maintain.



Reduce Operating Costs: Long life of PLX series pure lead technology reduces battery replacements by upto 47% over traditional VRLA batteries.



High temperature up to 65°C of the PLX series for the critical circumstances application.



LHR & XP SERIES ADVANTAGES

- High rate design, focus on high rate discharge;
- Advanced AGM technology for exceptional high-rate power;
- Long Life Alloy - minimizing grid growth, reducing gassing, and extending battery life;
- Higher power density, stronger overcurrent capability;
- Multi-layer sealing technology for higher reliability and safety.

PLX SERIES ADVANTAGES

- Thin Plate Pure Lead / Continuous Casting / Punching Technology, unique corrosion resistant alloy formula, extends battery life;
- High temperature case material with multi-layer sealing technology for terminals, suitable for extreme temperatures;
- Highly automated produce, superior consistency and reliability;
- Top and front terminals are optional, which saves space and facilitates installation and maintenance.

LP SERIES (SMALL SIZE) SPECIFICATIONS

Model	Rated Voltage (V)	Rated Capacity C20 (Ah)	Dimension(mm)				Weight (kg)	Terminal Type
			Length	Width	Height	Total height		
LP12-4.0	12	4	90	70	101	107	1.26	T1/T2
LP12-4.5	12	4.5	90	70	101	107	1.39	T1/T2
LP12-5.4	12	5.4	90	70	101	107	1.72	T1/T2
LP12-7.0E	12	6	151	65	93.5	99.5	1.81	T1/T2
LP12-7.0	12	7	151	65	93.5	99.5	2.03	T1/T2
LP12-7.5	12	7.5	151	65	93.5	99.5	2.28	T1/T2
LP12-8.0	12	8	151	65	93.5	99.5	2.50	T1/T2
LP12-8.5	12	8.5	151	65	93.5	99.5	2.45	T1/T2
LP12-9.0	12	9	151	65	93.5	99.5	2.52	T1/T2
LP12-24	12	24	166	175	125	125	7.20	T3
LP12-28	12	28	166	175	125	125	8.20	T3
LP12-33	12	33	195	130	164	167	9.80	T6-I(M6)

LP SERIES (MIDDLE SIZE) SPECIFICATIONS

Model	Rated Voltage (V)	Rated Capacity C10 (Ah)	Dimension(mm)				Weight (kg)	Terminal Type
			Length	Width	Height	Total height		
LP12-38	12	38	197	165	170	170	12	T6(M6)
LP12-55	12	55	229	138	205	211	16.2	T6(M6)
LP12-60	12	60	260	168	208	214	18.4	T6(M6)
LP12-70	12	70	348	167	178	178	21.4	T6(M6)
LP12-75	12	75	260	168	208	214	22.3	T6(M6)
LP12-80	12	80	260	168	208	214	23.8	T6(M6)
LP12-100	12	100	330	173	213	220	28.5	T11(M8)
LP12-150	12	150	483	170	238.5	238.5	42.7	T11(M8)
LP12-185	12	185	522	240	220	226	57	T11(M8)
LP12-200	12	200	522	240	220	226	59	T11(M8)
LP12-250	12	250	522	268	220	226	70.6	T11(M8)

LCP SERIES SPECIFICATIONS

Model	Rated Voltage (V)	W15min @1.67 V/cell	20hr@ 1.75V/cell	Dimension(mm)				Gross Weight (kg)	IR (mΩ)	Terminal Type
				Length	Width	Height	Total height			
LCP6-22W	6	22	7	150	34	94	100	1	17	T1/T2
LCP6-24W	6	24	7	150	34	94	100	1.07	15	T1/T2
LCP12-19W	12	19	5.5	151	51	93	99	1.75	30	T1/T2
LCP12-22W	12	22	7	151	65	93.5	99.5	1.82	34	T1/T2
LCP12-24W	12	24	7	151	65	93.5	99.5	2.13	31	T1/T2
LCP12-26W	12	26	7	151	65	93.5	99.5	2.17	25	T1/T2
LCP12-28W	12	28	7.5	151	65	93.5	99.5	2.24	23	T1/T2
LCP12-32W	12	32	8	151	65	93.5	99.5	2.31	19	T1/T2
LCP12-34W	12	34	8	151	65	93.5	99.5	2.35	21	T1/T2
LCP12-36W	12	36	9	151	65	93.5	99.5	2.46	16	T1/T2
LCP12-40W	12	40	12	151	98	95	101	3.38	18	T1/T2
LCP12-42W	12	42	12	151	98	95	101	3.48	17	T1/T2
LCP12-50W	12	50	14	151	98	95	101	3.58	16	T1/T2

LHR SERIES SPECIFICATIONS

Model	Rated Voltage (V)	Rated Capacity C10 (Ah)	W15min (1.67V/cell)	Dimension(mm)				Weight (kg)	Terminal Type
				Length	Width	Height	Total height		
LHR1224W	12	5.3	24	90	70	101	107	1.88	T1/T2
LHR1226W	12	6.51	26	151	65	93.5	99.5	2.08	T1/T2
LHR1230W	12	7	30	151	65	93.5	99.5	2.38	T1/T2
LHR1235W	12	7.8	35	151	65	93.5	99.5	2.5	T1/T2
LHR1236W	12	7.49	36	151	65	93.5	99.5	2.7	T2
LHR1255W	12	13	55	151	98	95	101	3.78	T1/T2
LHR12160W	12	45	160	197	165	170	170	14.2	T6(M6)
LHR12185W	12	55	185	229	138	205	211	16.2	T6(M6)
LHR12255W	12	70	255	348	167	178	178	21.4	T6(M6)
LHR12300W	12	75	300	256	173	213	216	23.7	T11(M8)
LHR12400W	12	100	400	330	173	213	216	31.2	T11(M8)
LHR12430W	12	100	430	330	173	213	216	32	T11(M8)
LHR12705W	12	190	705	532	207	214	220	59	T11(M8)
LHR12750W(A)	12	185	750	532	207	214	220	59.5	T11(M8)
LHR12800W	12	210	800	522	240	218	224	67	T11(M8)
LHR12890W	12	235	890	496	259	227	233	77	T11(M8)
LHR12390FT	12	95	390	508	110	235	239.5	34	T6-A(M8)
LHR1250W	2	400	1250	210	175	330	346	27.6	T18(M8)
LHR2900W	2	900	2900	410	175	330	345	58.5	T18(M8)

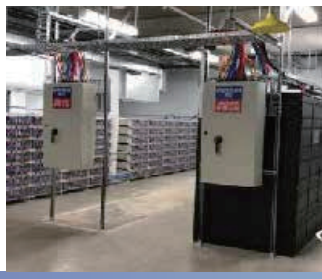
XP SERIES SPECIFICATIONS

Model	Rated Voltage (V)	Rated Capacity C20 (Ah)	W15min (1.67V/cell)	Dimension(mm)				Weight (kg)	Terminal Type
				Length	Width	Height	Total height		
XP12-100	12	27.6	100	164	125	174	174	8.4	T12-I/T12(M5)
XP12-150	12	35	150	195	130	164	167	10.44	T6-I(M6)
XP12-210	12	55	210	229	138	200	203	17.7	T6(M6)
XP12-300	12	82	300	260	168	208	211	24.2	T6(M6)
XP12-350	12	95	350	306	168	208	211	28.2	T6(M6)
XP12-540	12	155	540	335	172	275	278	45	T8(M6)

PLX SERIES SPECIFICATIONS

Model	Rated Voltage (V)	Rated Capacity C20 (Ah)	W15min (1.67V/cell)	Dimension(mm)				Weight (kg)	Terminal Type
				Length	Width	Height	Total height		
PLX12-260FT(A)	12	62	260	298.7	97	267	267	19.5	T6(M6)
PLX12-400FT(A)	12	100	400	405.4	108	287	287	31.5	M6(M8 Optional)
PLX12-450FT(A)	12	110	450	559	125	227	227	37.7	M6(M8 Optional)
PLX12-620FT(A)	12	150	620	559	125	277	277	48.5	M6(M8 Optional)
PLX12-700FT(A)	12	190	700	559	125	320	320	58	M6(M8 Optional)
PLX12-730FT	12	200	730	571	125	320	320	61	M6(M8 Optional)

APPLICATION CASES



E-mail: export@leoch.com
<https://www.leoch.com>

Publication No:LB-UPS-PB-EN-V1.4-202601

